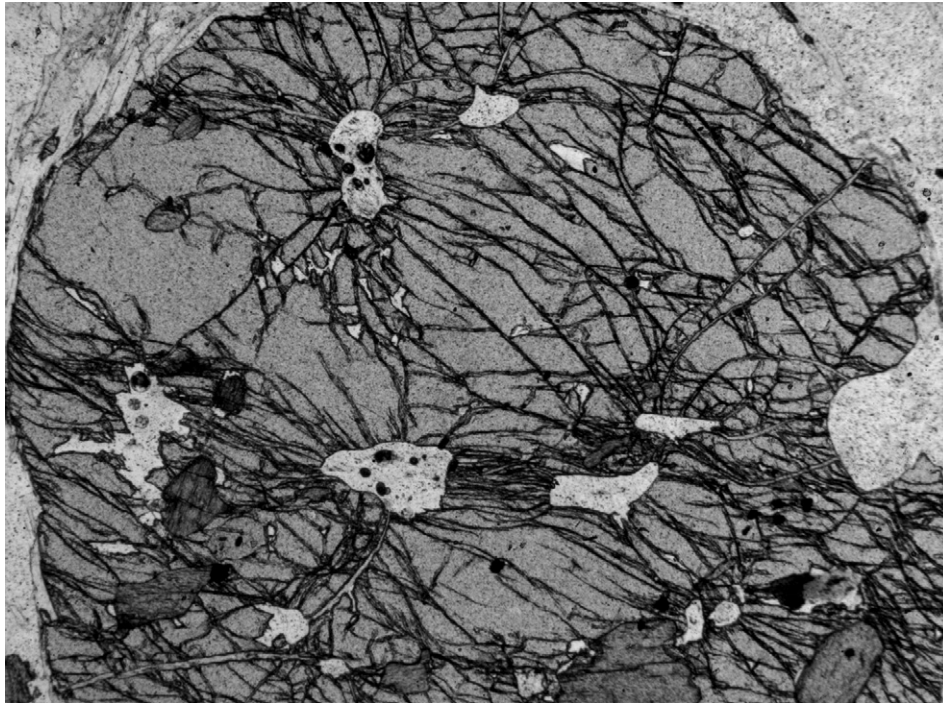


Editorial
Photograph of the Month



Radial fractures in Garnet, Dora Maira, Italy. Photograph Tom Blenkinsop, Townsville. © Tom Blenkinsop.

Garnet containing radial microfractures around quartz inclusions. The quartz inclusions have a palisade texture (visible under cross-polars; not seen here) indicating that they have inverted from coesite, one of the high pressure polymorphs of quartz. This reaction is accompanied by a 12% volume change. The quartz-coesite phase change or elastic stresses around the inclusions may have created the radial fractures. Specimen from Dora-Maira, Italy (provided by Mike Rubenach). Plain polarised light, width of field of view 4.5 mm.

Please send comments to jsg@uni-mainz.de.

Tom G. Blenkinsop
*Economic Geology Research Unit,
School of Earth Sciences,
James Cook University,
Townsville, QLD 4811,
Australia.*
E-mail address: thomas.blenkinsop@jcu.edu.au

Available online 12 March 2007